

WARNING: Disconnect main power at the source prior to installation!
Only qualified electricians should install Alcon Lighting products.

DMX-WiFi Installation Instructions

1. Mount an electrical box inside the wall

The controller can be installed in a standard electrical backbox. This box usually measures 60mm high and wide, except in Japan and America where it is 3.29 inches high. You can insert the AC/DC adapter inside or outside the backbox.

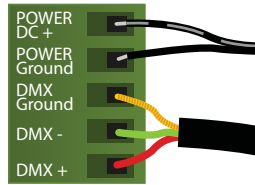


2. Connect the wires

Power: 5-10V, 0.6A AC/DC power supply. Be sure not to invert polarities.

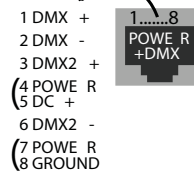
DMX: Connect the DMX cable to the lighting receivers (LEDs, Dimmers, Fixtures...) (for XLR: 1=grnd, 2=DMX, 3=DMX)

POWER+DMX WITH THE CONNECTOR BLOCK



OUTPUT DMX UNIVERSE #1 ONLY

POWER+DMX WITH THE RJ45 CABLE



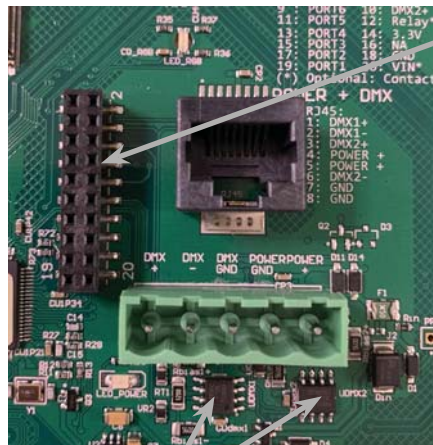
OUTPUT DMX UNIVERSE #1 & #2

3. Mount the interface on the wall

Mount the backside of the interface on the wall with 2 or more screws. Then, connect the DMX and power (connector block or RJ45).

Take note of the location of the WiFi aerial button (see legend) and install front panel carefully. The front panel is mounted by pressing it against the back plate and then sliding down. Two screws should then be attached underneath to hold the controller in place.

Other Connections



DMX CHIPS
To replace, solder the DMX chips to the 8 pin connectors.

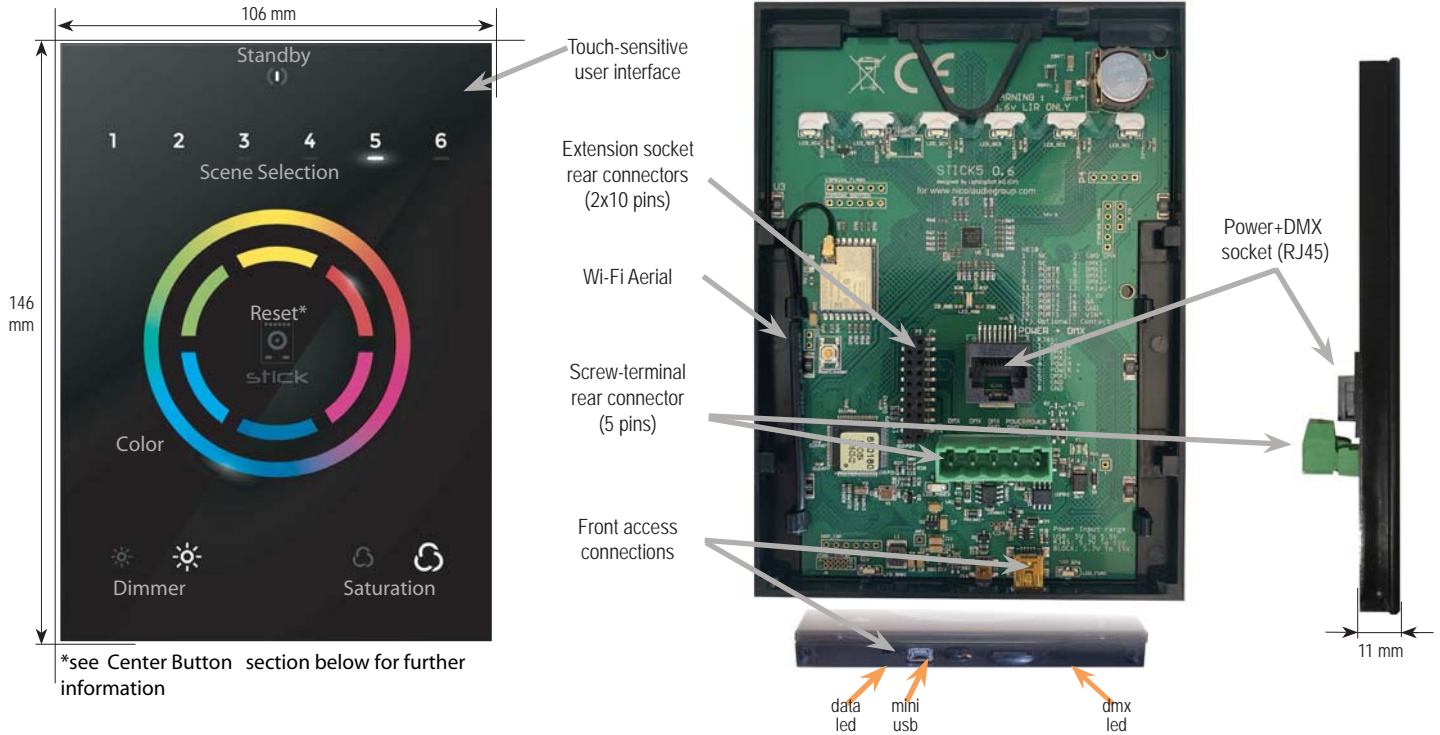
HE10 EXTENSION socket

NC	1	2	GND_DMUX
NC	3	4	DMX1-
PORT8	5	6	DMX1+
PORT7	7	8	DMX2-
PORT6	9	10	DMX2+
PORT5	11	12	Relay
PORT4	13	14	3.3v
PORT3	15	16	NC
PORT2	17	18	GND
PORT1	19	20	VIN*

* VIN (pin 20) is not protected and should not be used

WARNING: Disconnect main power at the source prior to installation!
Only qualified electricians should install Alcon Lighting products.

DMX Wall Controller



Programming the Controller

The DMX controller can be programmed from a PC or Mac using the software available on our website. Refer to the corresponding software manual for more information which is also available on our website. The firmware can be updated using the Hardware Manager which is included with the programming software.

ESA2 Software (Windows/Mac)
<http://www.nicolaudie.com/esa2.htm>

Network Control

The controller can be connected directly from a computer/smartphone/tablet (Access Point Mode), or can be connected to an existing local network (Station Mode). The controller is set to work in Access Point (AP) Mode by default.

- In AP Mode, the default network name is Smart DMX Interface XXXXXX where X is the serial number. The default password is 00000000 (8 zeros).
- To connect using Station Mode, use HardwareManager to set the Wifi settings to Station or Dual mode. Then connect your controller to your network by selecting your Wifi router from the Network List. The controller is set, by default, to get an IP address from the router via DHCP. If the network is not working with DHCP, a manual IP address and subnet mask can be set on the Ethernet options screen. If the network has a firewall enabled, allow port 2430.

iPhone/iPad/Android Control

Easy Remote Pro (iPad/iPhone. Android coming soon)
Create an entirely customized remote control interface for your tablet or smartphone. Easy Remote Pro is a powerful and intuitive app, allowing you to add buttons, faders, color wheels and more. Connect to a Wi-Fi network and the app will find all compatible devices on the local network. Available for iOS and Android.

Lightpad
Designed to work seamlessly with the controller, Lightpad provides an easy way to control your lights over a local Wi-Fi network. Connect and you will see a representation of your controller on the screen. Use the on-screen controls as you would the controller in real life.